



## SPECKLE PARK SALE

*Including...*

**The Twin Lake Livestock Dispersal & The Coulee Springs Ranch Complete Dispersal  
Saturday, October 24, 2020 • 1:00 pm • Notta Ranch, Neilburg, SK**





## Hosted By... Notta Ranch

*Jason and Sara Goodfellow*

# NOTTA Ranch

We are glad to welcome everyone back to Notta Ranch for this fall sale! It's with mixed emotions as we thumb through these sale offerings. The Dispersal of Twin Lake is an especially tough scenario to swallow, but a necessary one. Rick is deeply missed here on the ranch and the Speckle Park world lost a valuable member and friend too soon.

The Coulee Springs Dispersal is a great opportunity to add some proven bloodlines to your operation. Al and Deanne worked hard to perfect their herd and anyone will be lucky to snap up any of their genetics. Al, you might be getting out of the cattle business but we hope you still join us at the stall during show season!!

These two dispersals along with the offerings from our long time sale partners, Spots 'N Sprouts and Ravenworth, is making the Legendary Ladies Sale the place to get prime Speckle Park genetics!

There are a lot of options this fall. We encourage you to look deep into the genetic lines and extra homework always pays off!!! Look forward to a great sale, call anytime with questions or to arrange a viewing!

— *Jason and Sara*



## Notta Ranch

Box 307, Neilburg, SK S0M 2C0

P: 780-872-8788 • E: [nottaspecklepark@hotmail.com](mailto:nottaspecklepark@hotmail.com) • W: [www.nottaranch.com](http://www.nottaranch.com)

## SALE PARTNERS...



## Spots 'N Sprouts Speckle Parks

*John and Dale Herbert*

With 40 years of breeding Speckle Park we have had the opportunity to choose several replacement heifers from our herd. We feel the five heifers we have chosen for this sale from our group of 29 breds are some of our best. You will notice they are from three different sires, so if there is a certain sire you like best you have a choice.

The heifers were all vet checked on August 17 and are all safe in calf. We hope whichever one you choose, it will turn out to be an asset to your herd. Once again, we wish all the sellers and buyers the best in this Legendary Ladies Sale and we thank Jason and Sara for giving us the opportunity to take part in the sale and share some of our genetics.

— *John and Dale*



## Ravenworth Cattle

*Garry and Donna Berting*

We are excited to be part of a new female sale this fall. As we are not attending any shows, we thought we would put out an extra special offering from Ravenworth Cattle. We have a new sire, Wolf Lake Free Trade 42F, that has his first crop of calves on the ground and we are very impressed.

These are exciting times in the Speckle Park breed. Once you have looked over the catalogue give us a call with any questions, we love to talk about cattle, or come and tour our herd. We are able to offer every assistance for you to participate in the sale via online bidding, or on the phone. We would like to thank Jason and Sara for hosting this event and our sale partners John and Dale, The Twin Lake Livestock & The Coulee Springs Ranch.

— *Ravenworth Cattle Speckle Park*

## Spots 'N Sprouts Speckle Parks

Box 399, Neilburg, SK S0M 2C0

P: 306-893-4096 • C: 306-893-7520

E: [jdherbert@mcsnet.ca](mailto:jdherbert@mcsnet.ca) • W: [www.spotsnsproutsspecklepark.com](http://www.spotsnsproutsspecklepark.com)

# RAVENWORTH CATTLE

Box 134, Middle Lake, SK S0K 2X0

P: 306-367-2013 • C: 306-231-7567

E: [garry@ravenworth.com](mailto:garry@ravenworth.com)



## FROM THE DESK AT **T Bar...**



Welcome to the Legendary Ladies Female Sale hosted by the legendary Notta Ranch. I dare say this place has accumulated more championship banners and has more influence in the Speckle Park breed around the world as any. Jason and Sara have travelled the globe passionately promoting the Speckle Park breed and all of us have benefited from their efforts. For this we say thank you!

This sale is full of opportunity and excitement as the females offered are the type everyone needs more of. There is also some sadness as we say goodbye to two programs which will be missed; Twin Lake and Coulee Springs. However, this opens the door for each and every one of you to step up and take advantage of what they have built.

John and Dale are pioneers and have built one of the largest and longest running Speckle Park herds in the world. Many breeders have gotten their start with Spots 'N Sprouts females, don't miss your opportunity to select from the top of their bred heifer pen. Whether you are just starting out or you are well established you can never have too many JKH tattoos in your herd.

The Ravenworth program has also proven to be one to watch for. The Berting family are extremely hard working and dedicated to building a strong cow herd. They have had a great deal of success in the show ring over the past several years. It is not always easy to get Donna to part with females, so when she does, don't miss out.

This will be a historic weekend in the Speckle Park breed and we hope that you can be with us, but if you are unable, feel free to call any of the T Bar team and we would be more than happy to assist you.

— **Chris Poley**



**Chris Poley**  
306-220-5006



**Shane Michelson**  
403-363-9973



**Ben Wright**  
519-374-3335

## SALE PARTNERS...



### **Coulee Springs Ranch**

*Al & Deanne Bleackley*

We have watched this breed from its inception, and have been honored to be along for the ride. We are offering all our purebreds up for your consideration.

We have met many friends through the years by being a part of the Speckle Park Breed.

The time has come for us to exit the purebred cattle industry as we transition into pre-retirement.

We would like to thank everyone who helped us out in the early years. A special thanks to Jason and Sara from Notta Ranch and to John and Dale from Spots 'N Sprouts.

— **Al & Deanne Bleackley**

### **Coulee Springs Ranch**

Al & Deanne Bleackley

Box 117, Kenaston, SK S0G 2N0

Al: 306-561-7377 • Deanne: 306-221-2331 • E: d.a.bleackley@sasktel.net



### **Twin Lake Livestock**

*Cindy Mann*

I would like to thank Notta Ranch for including Twin Lake in their fall sale. Rick and I believed in these cattle of the future.

Twin Lake is offering the top end females and herd sire for your consideration. All sell no buy backs. Can be viewed in the Lloydminster area. Call Cindy for appointment 306-441-2091 or questions.

— **Cindy Mann**

### **Twin Lake Livestock**

Cindy Mann

Box 232, Kitscoty, AB T0B 2P0

P: 306-441-2091 • E: cindyamann@hotmail.ca

## GUEST CONSIGNOR...

### **Hidden Valley Speckle Park**

Peter & Roz Alexander

366 Dungay Creek Road, Dungay Creek, NSW 2484 Australia

P: 65-9622-6092 • W: [www.hiddenvalleyspecklepark.com](http://www.hiddenvalleyspecklepark.com)



# 2020 Legendary Ladies

## SPECKLE PARK SALE

**Saturday, Oct. 24, 2020 • 1:00 pm**  
**Notta Ranch, Neilburg, SK**



### SALE DAY PHONES...

#### Auctioneer

Chris Poley 306-220-5006

#### Ringside

Shane Michelson 403-363-9973

Ben Wright 519-374-3335

Chad Wilson 306-577-1256

#### Sale Management

T Bar C Cattle Co. Ltd. 306-933-4200

Box 2330, Warman, SK S0K 4S0

#### Marketing Agents

Eastern Canadian Contact

Andy Carter 902-664-8873

#### Consignors

Notta Ranch

Jason Goodfellow 780-872-8788

Sara Goodfellow 780-872-8787

#### Spots 'N Sprouts Speckle Parks

John Herbert 306-893-7520

#### Ravenworth Cattle

Garry Berting 306-231-7567

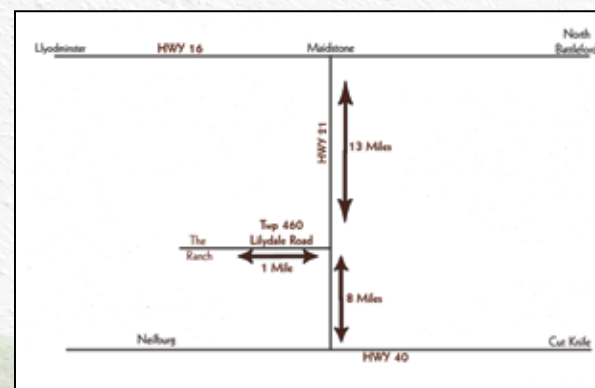
Donna Berting 306-231-5175

#### Twin Lake Livestock

Cindy Mann 306-441-2091

#### Coulee Springs Ranch

Al Bleackley 306-561-7377



#### Directions to the Ranch:

South off HWY 16 on HWY 21 about 12 miles and 1 mile west on Lilydale Road. You will see our sign at the corner of TWP RD 460 OR 8 miles north on HWY 21 from HWY 40 intersection.

Internet Bidding Available

**DLMS**  
www.dlms.ca

For more information call DLMS:  
Mark Shologan 780.699.5082 or  
DLMS Purebred Team 780.991.3025

**VIEW THE CATALOGUE ONLINE AT [WWW.BUYAGRO.COM](http://WWW.BUYAGRO.COM)**



## SPOTS 'N SPROUTS SPECKLE PARK



FEATURE

LOT  
**1**

SPOTS 'N SPROUTS *Gal* 3G

UNEEDA ZAPPER 13Z  
**SPOTS 'N SPROUTS DRAKE 111D**  
SPOTS 'N SPROUTS 7Y

UNEEDA WALTER 21W  
MISTY FRITZ OF P.A.R. 13M  
SPOTS 'N SPROUTS UTOPIA 104U  
SPOTS 'N SPROUTS 10T

SPOTS 'N SPROUTS EXPERT 102X  
**SPOTS 'N SPROUTS 1Z**  
SPOTS 'N SPROUTS 4P

RIVER HILL SKIPPER 6S  
SPOTS 'N SPROUTS 10S  
PRAIRIE HILL ENTICER 89G  
SPOTS 'N SPROUTS 7K

| PUREBRED FEMALE | TATTOO | REG #    | BIRTHDATE    | BIRTH WEIGHT | MYOSTATIN   | COAT COLOUR      | POLLED |
|-----------------|--------|----------|--------------|--------------|-------------|------------------|--------|
|                 | JKH 3G | 10735-PB | FEB. 9, 2019 | 75 LBS.      | NON-CARRIER | HOMOZYGOUS BLACK | PP     |

This dark sided heifer has lots of length, depth and leg under her.

Pasture exposed to Moovin Zpotz Gregory 4G (10346-PB) from May 12 to August 11 and then exposed to Spots 'N Sprouts Fernando 115F (9213-PB) from June 4 to August 11, 2020. As of August 17, 2020, vet confirmed her as about 60 days pregnant.

CONSIGNED BY: SPOTS 'N SPROUTS SPECKLE PARK



## SPOTS 'N SPROUTS SPECKLE PARK



LOT  
**2**

SPOTS 'N SPROUTS *Cal* 24G

UNEEDA ZAPPER 13Z  
**SPOTS 'N SPROUTS CAJUN 114C**  
SPOTS 'N SPROUTS 8U

SPOTS 'N SPROUTS EXPERT 102X  
**SPOTS 'N SPROUTS 12Z**  
SPOTS 'N SPROUTS 12X

UNEEDA WALTER 21W  
MISTY FRITZ OF P.A.R. 13M  
HWY.4 SPECKLE PARK 20K  
CODIAK JENNY 41J

RIVER HILL SKIPPER 6S  
SPOTS 'N SPROUTS 10S  
STYALS LIGHTNING LADD 14P  
MISS SAGE 8R

| PUREBRED<br>FEMALE | TATTOO      | REG #            | BIRTHDATE     | BIRTH WEIGHT |
|--------------------|-------------|------------------|---------------|--------------|
|                    | JKH 24G     | 10819-PB         | MAR. 16, 2019 | 75 LBS.      |
|                    | MYOSTATIN   | COAT COLOUR      |               | POLLED       |
|                    | NON-CARRIER | HOMOZYGOUS BLACK |               | PP           |

This heifer is deep, wide and thick with a quiet disposition. Pasture exposed to Moovin Zpotz Gregory 4G (10346-PB) from May 12 to August 11 and then exposed to Spots 'N Sprouts Fernando 115F (9213-PB) from June 4 to August 11, 2020. As of August 17, 2020, vet confirmed her as about 70 days pregnant.

CONSIGNED BY: SPOTS 'N SPROUTS SPECKLE PARK



LOT  
**3**

SPOTS 'N SPROUTS *Cal* 27G

RIVER HILL 12X ZAAR 7Z  
**RAVENWORTH RESOLUTE 122D**  
SPOTS 'N SPROUTS 7T

SPOTS 'N SPROUTS ZENITH 106Z  
**SPOTS 'N SPROUTS 19C**  
SPOTS 'N SPROUTS 3A

CODIAK FIDDLER GNK 12X  
RIVER HILL 12U X-ULTRA 07X  
CODIAK NORSEMAN RKW 38N  
STYALS MOONLIGHT LADY 4M

SPOTS 'N SPROUTS WAMPUM 102W  
STYALS DESIGNERS CHOICE 9M  
SPOTS 'N SPROUTS WAMPUM 102W  
SPOTS 'N SPROUTS 26X

| PUREBRED<br>FEMALE | TATTOO      | REG #            | BIRTHDATE     | BIRTH WEIGHT |
|--------------------|-------------|------------------|---------------|--------------|
|                    | JKH 27G     | 10821-PB         | MAR. 31, 2019 | 70 LBS.      |
|                    | MYOSTATIN   | COAT COLOUR      |               | POLLED       |
|                    | NON-CARRIER | HOMOZYGOUS BLACK |               | PP           |

This heifer carries a little more length and leg than most. Pasture exposed to Moovin Zpotz Gregory 4G (10346-PB) from May 12 to August 11 and then exposed to Spots 'N Sprouts Fernando 115F (9213-PB) from June 4 to August 11, 2020. As of August 17, 2020, vet confirmed her as about 80 days pregnant.

CONSIGNED BY: SPOTS 'N SPROUTS SPECKLE PARK



## SPOTS 'N SPROUTS SPECKLE PARK

SPOTS 'N SPROUTS *Gal* 30G

LOT  
4

UNEEDA ZAPPER 13Z  
**SPOTS 'N SPROUTS CAJUN 114C**  
SPOTS 'N SPROUTS 8U

UNEEDA Yael 06Y  
**SPOTS 'N SPROUTS 32D**  
SPOTS 'N SPROUTS 7A

UNEEDA WALTER 21W  
MISTY FRITZ OF P.A.R. 13M  
HWY.4 SPECKLE PARK 20K  
CODIAK JENNY 41J

CODIAK OSCAR GNK 8S  
TAMMY OF P.A.R. 06T  
SPOTS 'N SPROUTS WAMPUM 102W  
MISS SAGE 8R

| PUREBRED<br>FEMALE | TATTOO    | REG #            | BIRTHDATE     | BIRTH WEIGHT |
|--------------------|-----------|------------------|---------------|--------------|
|                    | MYOSTATIN | COAT COLOUR      | POLLED        |              |
|                    | JKH 30G   | 10823-PB         | APR. 22, 2019 | 75 LBS.      |
|                    | CARRIER   | HOMOZYGOUS BLACK | PP            |              |

This heifer is everything you could ask for. She is long, deep and wide with lots of height.

Pasture exposed to Moovin Zpotz Gregory 4G (10346-PB) from May 12 to August 11 and then exposed to Spots 'N Sprouts Fernando 115F (9213-PB) from June 4 to August 11, 2020. As of August 17, 2020, vet confirmed her as about 60 days pregnant.

CONSIGNED BY: SPOTS 'N SPROUTS SPECKLE PARK



SPOTS 'N SPROUTS *Gal* 35G

LOT  
5

UNEEDA ZAPPER 13Z  
**SPOTS 'N SPROUTS CAJUN 114C**  
SPOTS 'N SPROUTS 8U

UNEEDA Yael 06Y  
**SPOTS 'N SPROUTS 31C**  
SPOTS 'N SPROUTS 41Z

UNEEDA WALTER 21W  
MISTY FRITZ OF P.A.R. 13M  
HWY.4 SPECKLE PARK 20K  
CODIAK JENNY 41J

CODIAK OSCAR GNK 8S  
TAMMY OF P.A.R. 06T  
STAR BANK 64R REMEDY 9W  
SPOTS'N SPROUTS 19L

| PUREBRED<br>FEMALE | TATTOO      | REG #            | BIRTHDATE     | BIRTH WEIGHT |
|--------------------|-------------|------------------|---------------|--------------|
|                    | MYOSTATIN   | COAT COLOUR      | POLLED        |              |
|                    | JKH 35G     | 10826-PB         | MAR. 22, 2019 | 75 LBS.      |
|                    | NON-CARRIER | HOMOZYGOUS BLACK | PP            |              |

This heifer is thick with lots of rib and a quiet disposition.

Pasture exposed to Moovin Zpotz Gregory 4G (10346-PB) from May 12 to August 11 and then exposed to Spots 'N Sprouts Fernando 115F (9213-PB) from June 4 to August 11, 2020. As of August 17, 2020, vet confirmed her as about 85 days pregnant.

CONSIGNED BY: SPOTS 'N SPROUTS SPECKLE PARK





# RAVENWORTH CATTLE

## FEATURE



LOT  
**6**

RAVENWORTH *Acadia* 122G

RIVER HILL 12X ZAAR 7Z  
**RAVENWORTH TYCHO 106E**  
STAR BANK SILKEN 83S

CODIAK FIDDLER GNK 12X  
RIVER HILL 12U X-ULTRA 07X  
SPOTS 'N SPROUTS NEFROM 101N  
STAR BANK 4P

RAVENWORTH INVICTUS 103C  
**RAVENWORTH ACADIA 107E**  
RAVENWORTH ACADIA 113C

RAVENWORTH KLEOS 3Y  
RAVENWORTH NORTHERN STAR 101A  
RIVER HILL 12X ZAAR 7Z  
RAVENWORTH ACADIA 115A

| PUREBRED FEMALE | TATTOO   | REG #    | BIRTHDATE    | BIRTH WEIGHT | MYOSTATIN   | COAT COLOUR      | POLLED |
|-----------------|----------|----------|--------------|--------------|-------------|------------------|--------|
|                 | GDB 122G | 11152-PB | MAR. 1, 2019 | 78 LBS.      | NON-CARRIER | HOMOZYGOUS BLACK | PP     |

This bred heifer has all the genetics to make a cow. Her mother is Ravenworth Acadia 107E, she won the Speckle Park First Lady Classic at Agribition in 2018. Her maternal siblings have been in our show string many times over the years and have always been some of our favorites. This heifer is very long. The Acadia cow line is always sought after. She is bred to our new sire, Wolf Lake Free Trade 42F, the same sire as the two heifer calves we have on offer. **Owned with Below Sea Level Speckle Park New Zealand.**

**Hand bred to Wolf Lake Free Trade 42F on April 23, 2020. Pasture exposed to Wolf Lake Free Trade 42F from May 28 to July 23, 2020.**

**CONSIGNED BY: RAVENWORTH CATTLE**



## RAVENWORTH CATTLE

### RAVENWORTH *Lightning Lady* 310H

LOT  
7

JSF TRADE SECRET 11A  
**WOLF LAKE FREE TRADE 42F**  
CODIAK NORA GNK 75Z

YOGI GOES REDNECK 7Y  
MONNERY RIVER 7W  
CODIAK PYUTE GNK 25X  
CODIAK WENDY GNK 23W

RAVENWORTH INVICTUS 103C  
**RAVENWORTH LIGHTNING LADY 105E**  
RAVENWORTH LIGHTNING LADY 120C

RAVENWORTH KLEOS 3Y  
RAVENWORTH NORTHERN STAR 101A  
RAVENWORTH NAVIGATOR 15Z  
SIX STAR LIGHTNING LADY 22W

| PUREBRED<br>FEMALE | TATTOO    | REG #       | BIRTHDATE    | BIRTH WEIGHT |
|--------------------|-----------|-------------|--------------|--------------|
|                    | GDB 310H  | APPLIED FOR | FEB. 1, 2020 | 75 LBS.      |
|                    | MYOSTATIN | COAT COLOUR | POLLED       |              |

The Granddam of this heifer was the Reserve Champion Senior Female at Agribition with full sibling to the dam at side, Ravenworth Stetson 112G, was our high selling bull at 2020 bull sale. This heifer is sired by Wolf Lake Free Trade, we selected this bull because of his dam. 105E is a great producing Invictus daughter, who is the mildest mannered mother in our herd. This is another cow line working well in our herd.

CONSIGNED BY: RAVENWORTH CATTLE



Paternal Granddam:  
CODIAK NORA GNK 75Z



Maternal Granddam:  
RAVENWORTH LIGHTNING LADY 120C



Dam:  
RAVENWORTH LIGHTNING LADY 105E



### RAVENWORTH *Acadia* 309H

LOT  
8

JSF TRADE SECRET 11A  
**WOLF LAKE FREE TRADE 42F**  
CODIAK NORA GNK 75Z

YOGI GOES REDNECK 7Y  
MONNERY RIVER 7W  
CODIAK PYUTE GNK 25X  
CODIAK WENDY GNK 23W

RAVENWORTH INVICTUS 103C  
**RAVENWORTH ACADIA 111F**  
STAR BANK SILKEN 83S

RAVENWORTH KLEOS 3Y  
RAVENWORTH NORTHERN STAR 101A  
SPOTS 'N SPROUTS NEFROM 101N  
STAR BANK 4P

| PUREBRED<br>FEMALE | TATTOO    | REG #       | BIRTHDATE    | BIRTH WEIGHT |
|--------------------|-----------|-------------|--------------|--------------|
|                    | GDB 309H  | APPLIED FOR | FEB. 1, 2020 | 52 LBS.      |
|                    | MYOSTATIN | COAT COLOUR | POLLED       |              |

If you are looking for a flashy heifer calf, this is it! She is smooth made, with an excellent topline. She brings the word showy to life, with her angular front end and unique color pattern. Her Granddam is an S cow who had her 13th calf this year. We have excellent half siblings on the Dams side in our herd working. The longevity in this maternal line shows that this heifer will grow and produce in your herd for years.

CONSIGNED BY: RAVENWORTH CATTLE



Dam:  
RAVENWORTH ACADIA 111F



Maternal Granddam:  
STAR BANK SILKEN 83S





## HIDDEN VALLEY SPECKLE PARK



LOT  
**9**

RAVENWORTH *Prairie Lily* 119F

A & W 15R  
**RAVENWORTH NAVIGATOR 15Z**  
STAR BANK URANIA 85U

STAR BANK 64R RIO 6W  
**RAVENWORTH PRAIRIE LILY 9Y**  
STAR BANK TWINKLE 51T

BELMORAL'S SPECIAL 99H  
TRIPLE A GEM 15G  
STAR BANK PERRIER 8P  
STAR BANK SKYGLOW 79S

NOTTA ROMEO 64R  
STAR BANK 99M  
SPOTS 'N SPROUTS NEFROM 101N  
STAR BANK 2H

|                    | TATTOO    | REG #       | BIRTHDATE    | BIRTH WEIGHT |
|--------------------|-----------|-------------|--------------|--------------|
| PUREBRED<br>FEMALE | GDB 119F  | 8314-PB     | FEB. 9, 2018 | 91 LBS.      |
|                    | MYOSTATIN | COAT COLOUR | POLLED       |              |
|                    | --        | ---         | ---          | --           |

This tidy young cow has a ton of future ahead of her!  
Pasture exposed to Notta 110B Hot Topic 305E from June 12 to September 15 and exposed to Notta 101Y Casino Royal 302C from July 18 to September 15, 2020.

CONSIGNED BY: HIDDEN VALLEY SPECKLE PARK

### Can't make it to the sale? Internet Bidding Available.

To view this sale visit [www.dlms.ca](http://www.dlms.ca), Fill out the registration form located under registration and sign-up for your free user account and select a username and password.

BIDDERS - To be approved as a bidder, Log in to [dlms.ca](http://dlms.ca) and click BUYER APPROVAL tab, select the sale you are interested in bidding at and click sign up.

For more information  
Call DLMS Reps:

Mark Shologan - 780-699-5082 or  
DLMS Purebred Team 780.991-3025

**DLMS**  
[www.dlms.ca](http://www.dlms.ca)



# NOTTA RANCH

LOT  
10

## 4 PACKAGES OF 10 UNITS OF SEMEN FROM YOUR CHOICE OF THE FOLLOWING BULLS

Here's a chance to choose from one of the six following breed stand out sires. All of these sires have created numerous stand out progeny! These opportunities don't come along often and units are limited! Must be in multiples of 5, Canada use only.



NOTTA ROMEO 64R



NOTTA 101Y DOUBLE DOWN 310D



SPOTS 'N SPROUTS BART 110B

LOT  
A

NOTTA *Romeo* 64R - ONLY 30 UNITS AVAILABLE

SPOTS 'N SPROUTS JUNO 103J  
**STAR BANK LACERTA 68L**  
STAR BANK 55H

P.A.R. GREAT WESTERN 11F  
SPOTS 'N SPROUTS 6A  
NORALTA 9E  
STAR BANK 43F

NORALTA 9E  
**STAR BANK 64L**  
JANETTE OF P.A.R. 44H

NORALTA 2B  
SPOTS AND SPROUTS 12A  
P.A.R. LITTLE EDDIE II 93E  
PUSSY KAT II OF P.A.R. 11D

PUREBRED MALE

| TATTOO  | REG #   | BIRTHDATE     | BIRTH WEIGHT |
|---------|---------|---------------|--------------|
| JMG 64R | 2085-FS | FEB. 13, 2005 | 78 LBS.      |

Canada use only.  
**CONSIGNED BY: NOTTA RANCH**

LOT  
B

NOTTA 101Y *Double Down* 310D - 40 UNITS AVAILABLE

STAR BANK KING GEORGE 82U  
**SIX STAR 82U ROYAL FLESH 101Y**  
STAR BANK 53R

SPOTS 'N SPROUTS NEFROM 101N  
STAR BANK 11H  
STAR BANK 58L  
STAR BANK 9E

RIVER HILL 26T WALKER 60W  
**NOTTA 60W PHOTO-FINISH 1Z**  
NOTTA PHO-FINISH 54P

RIVER HILL TRAFFIC JAM 26T  
RIVER HILL SHOW ME OFF 60S  
STAR BANK LACERTA 68L  
STAR BANK LEONID NIGHT 54L

PUREBRED MALE

| TATTOO   | REG #   | BIRTHDATE     | BIRTH WEIGHT |
|----------|---------|---------------|--------------|
| JMG 310D | 6453-PB | MAR. 18, 2016 | 85 LBS.      |

Canada use only.  
**CONSIGNED BY: NOTTA RANCH**

LOT  
C

SPOTS 'N SPROUTS *Bart* 110B - 40 UNITS AVAILABLE

NOTTA ROMEO 64R  
**STAR BANK 64R REMEDY 9W**  
STAR BANK 36R

STAR BANK LACERTA 68L  
STAR BANK 64L  
STAR BANK 94M  
STAR BANK 55H

STYALS LIGHTNING LADD 14P  
**SPOTS 'N SPROUTS 2W**  
STYALS MISS RKW 8N

HWY.4 SPECKLE PARK 20K  
LIGHTNING LADY 10C  
SPOTS'N SPROUTS KEELIE 101K  
CODIAK RKW 08J

PUREBRED MALE

| TATTOO   | REG #   | BIRTHDATE     | BIRTH WEIGHT |
|----------|---------|---------------|--------------|
| JKH 110B | 5066-PB | MAR. 22, 2014 | 85 LBS.      |

Canada use only.  
**CONSIGNED BY: NOTTA RANCH**



# NOTTA RANCH



SIX STAR 82U ROYAL FLESH 101Y



UNEEDA ZAPPER 13Z



STAR BANK LACERTA 68L

LOT  
D

SIX STAR 82U *Royal Flesh* 101Y - 40 UNITS AVAILABLE

SPOTS 'N SPROUTS NEFROM 101N  
**STAR BANK KING GEORGE 82U**  
STAR BANK 11H

PRAIRIE HILL ENTICER 89G  
SPOTS 'N SPROUTS 6A  
NORALTA 9E  
LIGHTNING LADY 19C

STAR BANK 58L  
**STAR BANK 53R**  
STAR BANK 9E

SPOTS 'N SPROUTS JUNO 103J  
STAR BANK 68G  
SPOTS 'N SPROUTS BOOMER 102B  
SPOTS AND SPROUTS 5W

PUREBRED MALE

| TATTOO   | REG #   | BIRTHDATE     | BIRTH WEIGHT |
|----------|---------|---------------|--------------|
| SIX 101Y | 3554-PB | FEB. 22, 2011 | 85 LBS.      |

Canada use only.

**CONSIGNED BY: NOTTA RANCH**

LOT  
E

UNEEDA *Zapper* 13Z - 40 UNITS AVAILABLE

P.A.R. PAPA RAZZI 6P  
**UNEEDA WALTER 21W**  
PRAIRIE HILL MILLIE 21M

P.A.R. MR. POWERSTROKE 4M  
MONALISA OF P.A.R. 6M  
PRAIRIE HILL MOST WANTED 15K  
PRAIRIE HILL GIDGET 92J

P.A.R. JAGR 68J  
**MISTY FRITZ OF P.A.R. 13M**  
JASHMAN OF P.A.R. 13J

P.A.R. NEW DESIGN -40° 1F  
DESIGNERS CHOICE OF P.A.R. 7F  
P.A.R. NEW DESIGN -40° 1F  
FRITZ ATIM LASS 13F

PUREBRED MALE

| TATTOO  | REG #   | BIRTHDATE     | BIRTH WEIGHT |
|---------|---------|---------------|--------------|
| WES 13Z | 3950-PB | APR. 12, 2012 | 91 LBS.      |

Canada use only.

**CONSIGNED BY: NOTTA RANCH**

LOT  
F

STAR BANK *Lacerta* 68L - 40 UNITS AVAILABLE

P.A.R. GREAT WESTERN 11F  
**SPOTS 'N SPROUTS JUNO 103J**  
SPOTS 'N SPROUTS 6A

THUNDER 1C  
PUSSY KAT II OF P.A.R. 11D  
ASPEN ACRES T.N.T. 4Y  
SPOTS AND SPROUTS 10X

NORALTA 9E  
**STAR BANK 55H**  
STAR BANK 43F

NORALTA 2B  
SPOTS AND SPROUTS 12A  
STAR BANK 1D  
LIGHTNING LADY 19C

PUREBRED MALE

| TATTOO  | REG #  | BIRTHDATE     | BIRTH WEIGHT |
|---------|--------|---------------|--------------|
| GGG 68L | B5Q-FS | APR. 17, 2001 | 80 LBS.      |

Canada use only.

**CONSIGNED BY: NOTTA RANCH**



# TWIN LAKE LIVESTOCK



FEATURE

LOT  
**11**

NOTTA KAGER 101Y

*Calypso* 203C

STAR BANK KING GEORGE 82U  
**SIX STAR 82U ROYAL FLESH 101Y**  
STAR BANK 53R

SPOTS 'N SPROUTS NEFROM 101N  
STAR BANK 11H  
STAR BANK 58L  
STAR BANK 9E

P.A.R. ROLLIN STONE 01R  
**POPPY OF P.A.R. 55Z**  
POPPY OF P.A.R. 55P

P.A.R. KING PIN 1K  
ASPEN ACRES 01B  
CALAMASUE 4M  
MELISSA OF P.A.R. 5M

PUREBRED FEMALE

| TATTOO   | REG #   | BIRTHDATE    | BIRTH WEIGHT | MYOSTATIN   | COAT COLOUR      | POLLED |
|----------|---------|--------------|--------------|-------------|------------------|--------|
| JMG 203C | 5667-PB | FEB. 4, 2015 | 95 LBS.      | NON-CARRIER | HOMOZYGOUS BLACK | PP     |

This deep sided female has it all. She's big framed, has extra neck extension and the extra milking ability any herd would welcome! She was Reserve Champion Female at the 2016 Agribition in Regina, Saskatchewan.  
Pasture exposed to Notta 110B Jus Chillin 302F from April 5 to September 15, 2020.  
CONSIGNED BY: TWIN LAKE LIVESTOCK



## TWIN LAKE LIVESTOCK



LOT  
**12**

NOTTA 101Y *Cara* 206C

STAR BANK KING GEORGE 82U  
**SIX STAR 82U ROYAL FLESH 101Y**  
STAR BANK 53R

STYALS LIGHTNING LADD 14P  
**SPOTS 'N SPROUTS 20U**  
SPOTS 'N SPROUTS 3P

SPOTS 'N SPROUTS NEFROM 101N  
STAR BANK 11H  
STAR BANK 58L  
STAR BANK 9E

HWY.4 SPECKLE PARK 20K  
LIGHTNING LADY 10C  
PRAIRIE HILL ENTICER 89G  
SPOTS'N SPROUTS 5J

|                    | TATTOO    | REG #       | BIRTHDATE     | BIRTH WEIGHT |
|--------------------|-----------|-------------|---------------|--------------|
| PUREBRED<br>FEMALE | JMG 206C  | 5666-PB     | FEB. 15, 2015 | 62 LBS.      |
|                    | MYOSTATIN | COAT COLOUR | POLLED        |              |
|                    | --        | ---         | --            |              |

Notta 101Y Cara 206C is an extremely long spined female with feet and legs that will definitely stand the test of time.

Pasture exposed to Notta 110B Jus Chillin 302F from April 5 to September 15, 2020.

CONSIGNED BY: TWIN LAKE LIVESTOCK



LOT  
**13**

D.A.M. DOTS *Elle* 12E

NOTTA 101Y BLACK CAP 151A  
**NOTTA 151A CAUSE N EFFECT 309C**  
NOTTA 300X THETA 11A

RAVENWORTH TORQUE 116A  
**D.A.M. DOTS CAROLINE 24C**  
STAR BANK ALHENA 53A

SIX STAR 82U ROYAL FLESH 101Y  
NOTTA 50S JANETTE 5W  
SPOTS 'N SPROUTS STANDS ALONE  
STAR BANK THETA 42T

RIVER HILL 101U XODUS 60X  
STAR BANK TARAZED 46T  
STAR BANK EXTOLLER 93X  
STAR BANK EXTRAGALACTIC 76X

|                    | TATTOO    | REG #       | BIRTHDATE    | BIRTH WEIGHT |
|--------------------|-----------|-------------|--------------|--------------|
| PUREBRED<br>FEMALE | DAM 12E   | 7345-PB     | MAR. 1, 2017 | 69 LBS.      |
|                    | MYOSTATIN | COAT COLOUR | POLLED       |              |
|                    | --        | ---         | --           |              |

A great addition to anyone's herd. She's not the biggest young cow out there, but she will produce as good as any.

Pasture exposed to Notta 110B Jus Chillin 302F from April 5 to September 15, 2020.

CONSIGNED BY: TWIN LAKE LIVESTOCK



## TWIN LAKE LIVESTOCK



FEATURE

LOT  
**14**

SPOTS 'N SPROUTS 1B

STAR BANK KING GEORGE 82U  
**SIX STAR 82U ROYAL FLESH 101Y**  
STAR BANK 53R

SPOTS 'N SPROUTS NEFROM 101N  
STAR BANK 11H  
STAR BANK 58L  
STAR BANK 9E

STYALS LIGHTNING LADD 14P  
**SPOTS 'N SPROUTS 2U**  
TWIN RIVER 4R

HWY.4 SPECKLE PARK 20K  
LIGHTNING LADY 10C  
HWY.4 SPECKLE PARK 20K  
ASPEN ACRES E.T. II 4E

PUREBRED FEMALE

| TATTOO | REG #   | BIRTHDATE    | BIRTH WEIGHT | MYOSTATIN   | COAT COLOUR      | POLLED |
|--------|---------|--------------|--------------|-------------|------------------|--------|
| JKH 1B | 4783-PB | MAR. 6, 2014 | 70 LBS.      | NON-CARRIER | HOMOZYGOUS BLACK | PP     |

DEEP and BROODY! If you want one that is extra think, this girl rises to the top of that list easily. Bertie, as we call her, was in the Flush program last winter for two flushes. Pasture exposed to Notta 110B Jus Chillin 302F from April 5 to September 15, 2020.  
CONSIGNED BY: TWIN LAKE LIVESTOCK



## TWIN LAKE LIVESTOCK



LOT  
**15**

RIVER HILL 54Z *Chyna-Angel* 45C

RIVER HILL 26T WALKER 60W  
**RIVER HILL 60W LINE DRIVE 54Z**  
NOTTA PHO-FINISH 54P

RIVER HILL 68L STRIKER 50U  
**RIVER HILL YOUR MY ANGEL 45Y**  
RIVER HILL BLACK ANGEL 05M

RIVER HILL TRAFFIC JAM 26T  
RIVER HILL SHOW ME OFF 60S  
STAR BANK LACERTA 68L  
STAR BANK LEONID NIGHT 54L

STAR BANK LACERTA 68L  
PRAIRIE HILL NABOB 50N  
P.A.R. HEMORRHOID 25H  
CODIAK PRAIRIE FIRE RKW 05J

| PUREBRED<br>FEMALE | TATTOO    | REG #       | BIRTHDATE     | BIRTH WEIGHT |
|--------------------|-----------|-------------|---------------|--------------|
|                    | BED 45C   | 5569-PB     | APR. 23, 2015 | 86 LBS.      |
|                    | MYOSTATIN | COAT COLOUR |               | POLLED       |
|                    | --        | ---         |               | --           |

A lovely River Hill breed cow that should easily find her way into another great program.  
Pasture exposed to Notta 110B Jus Chillin 302F from April 5 to September 15, 2020.  
CONSIGNED BY: TWIN LAKE LIVESTOCK



LOT  
**16**

RIVER HILL 54Z *Deja Vu* 035D

RIVER HILL 26T WALKER 60W  
**RIVER HILL 60W LINE DRIVE 54Z**  
NOTTA PHO-FINISH 54P

C.A.M.Y. TORQUE 03T  
**CODIAK GNK 35X**  
CODIAK BONITA RKW 65M

RIVER HILL TRAFFIC JAM 26T  
RIVER HILL SHOW ME OFF 60S  
STAR BANK LACERTA 68L  
STAR BANK LEONID NIGHT 54L

FLAT LAKE BIG BEN 69M  
CODIAK MARCY RKW 11M  
UPTO SPECS HOMER 24K  
HWY. 4 SPECKLE PARK 25J

| PUREBRED<br>FEMALE | TATTOO    | REG #       | BIRTHDATE     | BIRTH WEIGHT |
|--------------------|-----------|-------------|---------------|--------------|
|                    | BED 035D  | 6106-PB     | FEB. 15, 2016 | 88 LBS.      |
|                    | MYOSTATIN | COAT COLOUR |               | POLLED       |
|                    | --        | ---         |               | --           |

Deja Vu is a daughter of River Hill 60W Line Drive and you can see that power coming through.  
Pasture exposed to Notta 110B Jus Chillin 302F from April 5 to September 15, 2020.  
CONSIGNED BY: TWIN LAKE LIVESTOCK



## TWIN LAKE LIVESTOCK

DOUBLE S *Claire* 01C

LOT  
**17**

P.A.R. LITTLE TNT 88W  
**P.A.R. ASCAPE 89A**  
P.A.R. MONALISA 89X

UNEEDA WONDERBAR 05W  
**DOUBLE S RAINA DOLL 01Z**  
P.A.R. RAINA DOLL 154W

ASPEN ACRES T.N.T. 4Y  
MELISSA OF P.A.R. 5M  
P.A.R. TOUCH DOWN 600T  
MONA LISA IV OF P.A.R. 88U  
P.A.R. TOUCH DOWN 600T  
LANDRY OF P.A.R. 5L  
P.A.R. ROLLIN STONE 01R  
RAINA OF P.A.R. 54R

| PUREBRED<br>FEMALE | TATTOO    | REG #       | BIRTHDATE     | BIRTH WEIGHT |
|--------------------|-----------|-------------|---------------|--------------|
|                    | MYOSTATIN | COAT COLOUR | POLLED        |              |
|                    | SWS 01C   | 5692-PB     | FEB. 25, 2015 | 73 LBS.      |
|                    | ---       | ---         | ---           | ---          |

This cow has a big top and a big hip. Double S Claire is extra thick with a different pedigree that will add to any herd.  
Pasture exposed to Notta 110B Jus Chillin 302F from April 5 to September 15, 2020.  
CONSIGNED BY: TWIN LAKE LIVESTOCK



SPOTS 'N SPROUTS 10C

LOT  
**18**

UNEEDA WALTER 21W  
**UNEEDA ZAPPER 13Z**  
MISTY FRITZ OF P.A.R. 13M

ASPEN ACRES NOBLEMAN 3N  
**SPOTS 'N SPROUTS 10T**  
STYALS FANCY FEET 10M

P.A.R. PAPA RAZZI 6P  
PRAIRIE HILL MILLIE 21M  
P.A.R. JAGR 68J  
JASHMAN OF P.A.R. 13J  
KING KARAT OF ASPEN ACRES 1K  
ASPEN ACRES GRAY GHOST 3G  
CODIAK PRAIRIE FIRE 10J  
ASPEN ACRES FANCY FEET 10F

| PUREBRED<br>FEMALE | TATTOO    | REG #       | BIRTHDATE     | BIRTH WEIGHT |
|--------------------|-----------|-------------|---------------|--------------|
|                    | MYOSTATIN | COAT COLOUR | POLLED        |              |
|                    | JKH 10C   | 5700-PB     | MAR. 29, 2015 | 80 LBS.      |
|                    | ---       | ---         | ---           | ---          |

There is a deep sided power cow family on this pedigree!!  
Pasture exposed to Notta 110B Jus Chillin 302F from April 5 to September 15, 2020.  
CONSIGNED BY: TWIN LAKE LIVESTOCK





## TWIN LAKE LIVESTOCK



LOT  
**19**

JSF *Midnight Lady* 46F

YOGI GOES REDNECK 7Y  
**JSF TRADE SECRET 11A**  
MONNERY RIVER 7W

CODIAK HEAR THE GHOST GNK 22Z  
**JSF MIDNIGHT LADY 2C**  
PONDEROSA SPOTS A ROARIN 19Y

REDNECK WILD WILLY 2W  
ASPEN ACRES LINDA LOU 10L  
RIVER HILL SHOW BIZ 93S  
MONNERY RIVER 7P

LEGACY UNRIVALED 12U  
CODIAK URSULA GNK 3U  
HEARTRIDGE ARIES 01W  
PONDEROSA MIDNIGHT LADY 10U

| PUREBRED<br>FEMALE | TATTOO      | REG #            | BIRTHDATE     | BIRTH WEIGHT |
|--------------------|-------------|------------------|---------------|--------------|
|                    | JSF 46F     | 8520-PB          | MAR. 20, 2018 | 70 LBS.      |
|                    | MYOSTATIN   | COAT COLOUR      |               | POLLED       |
|                    | NON-CARRIER | HOMOZYGOUS BLACK |               | PP           |

Midnight Lady packs everything you'd want in a female; style, femininity, thickness and structure. She comes from a long line of maternal foundation. Pasture exposed to Notta 110B Jus Chillin 302F from April 5 to September 15, 2020.

CONSIGNED BY: TWIN LAKE LIVESTOCK



LOT  
**20**

SPOTS 'N SPROUTS *Emma* 1E

UNEEDA Yael 06Y  
**SPOTS 'N SPROUTS BRAVO 118B**  
SHER SPECS SUNDAY 23Y

SIX STAR 82U ROYAL FLESH 101Y  
**SPOTS 'N SPROUTS 1B**  
SPOTS 'N SPROUTS 2U

CODIAK OSCAR GNK 8S  
TAMMY OF P.A.R. 06T  
SPOTS 'N SPROUTS TALISMAN 101T  
SHER SPECS HARRIETTE 12L

STAR BANK KING GEORGE 82U  
STAR BANK 53R  
STYALS LIGHTNING LADD 14P  
TWIN RIVER 4R

| PUREBRED<br>FEMALE | TATTOO    | REG #       | BIRTHDATE     | BIRTH WEIGHT |
|--------------------|-----------|-------------|---------------|--------------|
|                    | JKH 1E    | 7082-PB     | FEB. 19, 2017 | 70 LBS.      |
|                    | MYOSTATIN | COAT COLOUR |               | POLLED       |
|                    | --        | ---         |               | --           |

You know her dam; this one is stamped the same way with an added colour bonus.

Pasture exposed to Notta 110B Jus Chillin 302F from April 5 to September 15, 2020.

CONSIGNED BY: TWIN LAKE LIVESTOCK



## TWIN LAKE LIVESTOCK

TWIN LAKE *Easy 2 Cee* 206E

LOT  
21

RIVER HILL 26T WALKER 60W  
**NOTTA 60W CHIEF OF STAFF 1C**  
NOTTA 68L UPTOWN GIRL 16U

SIX STAR 82U ROYAL FLESH 101Y  
**NOTTA 101Y CARA 206C**  
SPOTS 'N SPROUTS 20U

RIVER HILL TRAFFIC JAM 26T  
RIVER HILL SHOW ME OFF 60S  
STAR BANK LACERTA 68L  
STAR BANK LEONID NIGHT 54L  
STAR BANK KING GEORGE 82U  
STAR BANK 53R  
STYALS LIGHTNING LADD 14P  
SPOTS 'N SPROUTS 3P

| PUREBRED<br>FEMALE | TATTOO    | REG #       | BIRTHDATE    | BIRTH WEIGHT |
|--------------------|-----------|-------------|--------------|--------------|
|                    | TLL 206E  | 10236-PB    | APR. 1, 2017 | 75 LBS.      |
|                    | MYOSTATIN | COAT COLOUR | POLLED       |              |
|                    | --        | ---         | --           |              |

This cow has a great dam to back up her style and breeding potential!  
Pasture exposed to Notta 110B Jus Chillin 302F from April 5 to September 15, 2020.  
CONSIGNED BY: TWIN LAKE LIVESTOCK



TWIN LAKE *First Lady* 035F

LOT  
22

SIX STAR 82U ROYAL FLESH 101Y  
**NOTTA 101Y BLACK CAP 151A**  
NOTTA 50S JANETTE 5W

RIVER HILL 60W LINE DRIVE 54Z  
**RIVER HILL 54Z DEJA VU 035D**  
CODIAK GNK 35X

STAR BANK KING GEORGE 82U  
STAR BANK 53R  
PRAIRIE HILL JOHN WAYNE 50S  
NOTTA PRETENDER 64P  
RIVER HILL 26T WALKER 60W  
NOTTA PHO-FINISH 54P  
C.A.M.Y. TORQUE 03T  
CODIAK BONITA RKW 65M

| PUREBRED<br>FEMALE | TATTOO    | REG #       | BIRTHDATE    | BIRTH WEIGHT |
|--------------------|-----------|-------------|--------------|--------------|
|                    | TLL 035F  | 10237-PB    | APR. 8, 2018 | --           |
|                    | MYOSTATIN | COAT COLOUR | POLLED       |              |
|                    | --        | ---         | --           |              |

A quaint, young cow that expresses lots of breed traits.  
Pasture exposed to Notta 110B Jus Chillin 302F from April 5 to September 15, 2020.  
CONSIGNED BY: TWIN LAKE LIVESTOCK





## TWIN LAKE LIVESTOCK



LOT  
**23**

LOT  
**23**

NOTTA 110B *Jus Chillin* 302F

STAR BANK 64R REMEDY 9W  
**SPOTS 'N SPROUTS BART 110B**  
SPOTS 'N SPROUTS 2W

SPOTS 'N SPROUTS STANDS ALONE  
**NOTTA 300X THETA 11A**  
STAR BANK THETA 42T

NOTTA ROMEO 64R  
STAR BANK 36R  
STYALS LIGHTNING LADD 14P  
STYALS MISS RKW 8N

STYALS LIGHTNING LADD 14P  
SPOTS 'N SPROUTS 2R  
SPOTS 'N SPROUTS NEFROM 101N  
JANETTE OF P.A.R. 44H

| PUREBRED<br>MALE | TATTOO      | REG #            | BIRTHDATE     | BIRTH WEIGHT |
|------------------|-------------|------------------|---------------|--------------|
|                  | JMG 302F    | 8637-PB          | JAN. 23, 2018 | 84 LBS.      |
|                  | MYOSTATIN   | COAT COLOUR      | POLLED        |              |
|                  | NON-CARRIER | HOMOZYGOUS BLACK | PP            |              |

This one is calm, cool and correct. Any program that needs a temperament adjustment, he's the one!  
**CONSIGNED BY: TWIN LAKE LIVESTOCK**

LOT  
**24**

20 UNITS OF SEMEN - NOTTA 110B *Jus Chillin* 302F

LOT **24A** - 10 UNITS OF SEMEN  
LOT **24B** - 10 UNITS OF SEMEN

Canada use only.

His calves can be seen through appointment and are for sale off of these females.  
Minnamurra Pastoral Company Pty Limited has purchased the exclusive rights to all exportable semen.

Stored at Alta Genetics, Rocky View County, Alberta.

All cost borne by the purchaser.

**CONSIGNED BY: TWIN LAKE LIVESTOCK**



## TWIN LAKE LIVESTOCK



RAVENWORTH PRAIRIE LILY 101C

LOT  
**25**

PACKAGE OF 3 *Embryos* - OUTBACK *Joey* 25D X RAVENWORTH *Prairie Lily* 101C

CODIAK OH MY GOSH GNK 60A

**OUTBACK JOEY 25D**

RIVER HILL 54Z BELLA-JOY 25B

CLEAR VIEW TY 205R

CODIAK UNIQUE GNK 8R

RIVER HILL 60W LINE DRIVE 54Z

RIVER HILL 68 ULTIMATE JOY 25U

STAR BANK LACERTA 68L

**RAVENWORTH PRAIRIE LILY 101C**

RAVENWORTH PRAIRIE LILY 10Y

SPOTS 'N SPROUTS JUNO 103J

STAR BANK 55H

STAR BANK 64R RIO 6W

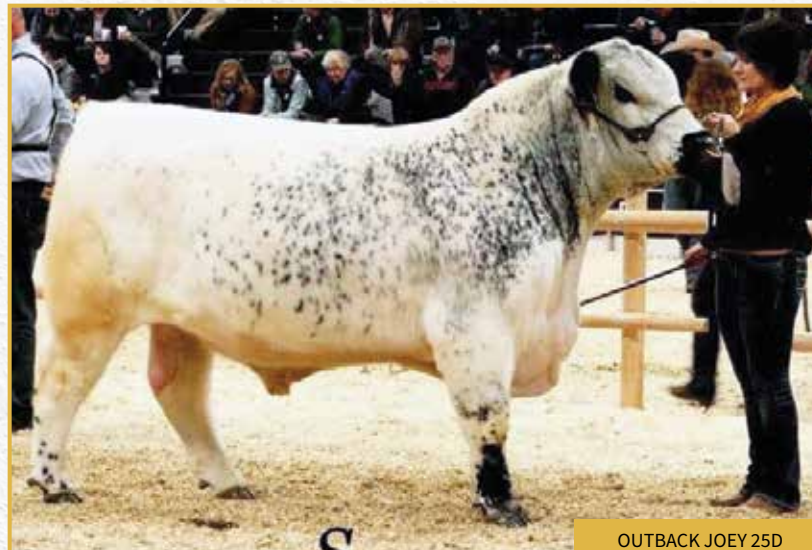
STAR BANK TARAZED 46T

Prairie Lily 101C is a Star Bank Lacerta daughter with tremendous length and eye appeal. We chose Outback Joey as a sire to increase size and guarantee 100% colour pattern on the offspring.

Embryos are stored at Alta Genetics, Rocky View County, Alberta.

All costs shall be borne by the purchaser.

**CONSIGNEE BY: TWIN LAKE LIVESTOCK**



OUTBACK JOEY 25D



## COULEE SPRINGS RANCH



LOT  
**26**

COULEE SPRINGS RANCH *Abrew* 8A

BELMORAL'S SPECIAL 99H  
**A & W 15R**  
TRIPLE A GEM 15G

NOTTA ROMEO 64R  
**STAR BANK WITCHES BREW 16W**  
STAR BANK 89S

THUNDER 168D  
LIGHTNING LADY 2Y  
ASPEN ACRES T.N.T. 4Y  
SPOTS AND SPROUTS 15Y

STAR BANK LACERTA 68L  
STAR BANK 64L  
STAR BANK 58L  
STAR BANK 2H

| PUREBRED<br>FEMALE | TATTOO      | REG #            | BIRTHDATE    | BIRTH WEIGHT |
|--------------------|-------------|------------------|--------------|--------------|
|                    | CSR 8A      | 4310- PB         | MAY 13, 2013 | 63 LBS.      |
|                    | MYOSTATIN   | COAT COLOUR      |              | POLLED       |
|                    | NON-CARRIER | HOMOZYGOUS BLACK |              | PP           |

- Her maternal sister, Coulee Springs Ranch Brew 3B, sells as Lot 27.
  - A daughter, Coulee Springs Crewella 7C, was selected by Andchris Farms, Ingersoll, Ontario.
  - Her mother, Star Bank Witches Brew 16W, is a prolific donor female now working for INC Cattle Company, Saskatoon, Saskatchewan and her sire is the predictable, A & W 15R.
  - This larger framed female is well balanced with lots of volume.
  - Pasture exposed to Notta 119D Phantom 310F from May 28 to September 1, 2020.
- CONSIGNED BY: COULEE SPRINGS RANCH



LOT  
**26A**

COULEE SPRINGS RANCH *Hank* 6H

HWY. 4 SPECKLE PARK 2H  
**NOTTA 2H DECK HAND 318D**  
STAR BANK 54R

PARKLAND SPECKLE PARKS 5B  
LEIGH-AL-ANN PRINCESS 1B  
STAR BANK 94M  
STAR BANK 11

| PUREBRED<br>MALE | TATTOO    | REG #       | BIRTHDATE    | BIRTH WEIGHT |
|------------------|-----------|-------------|--------------|--------------|
|                  | CSR 6H    | 11044- PB   | APR. 6, 2020 | 87 LBS.      |
|                  | MYOSTATIN | COAT COLOUR |              | POLLED       |
|                  | CARRIER   | RED CARRIER |              | PP           |

CONSIGNED BY: COULEE SPRINGS RANCH



## COULEE SPRINGS RANCH



FEATURE

LOT  
**27**

COULEE SPRINGS RANCH *Brew* 3B

STYALS LIGHTNING LADD 14P  
**SPOTS 'N SPROUTS EXCEL 103X**  
CODIAK NADIA RKW 4N

HWY.4 SPECKLE PARK 20K  
LIGHTNING LADY 10C  
CODIAK PRAIRIE FIRE RKW 14J  
ATIM LADY 3D

NOTTA ROMEO 64R  
**STAR BANK WITCHES BREW 16W**  
STAR BANK 89S

STAR BANK LACERTA 68L  
STAR BANK 64L  
STAR BANK 58L  
STAR BANK 2H

PUREBRED FEMALE

| TATTOO | REG #    | BIRTHDATE    | BIRTH WEIGHT | MYOSTATIN | COAT COLOUR      | POLLED |
|--------|----------|--------------|--------------|-----------|------------------|--------|
| CSR 3B | 5340- PB | MAY 13, 2014 | 71 LBS.      | CARRIER   | HOMOZYGOUS BLACK | HP     |

- Her maternal sister, Coulee Springs Ranch Abrew 8A, sells as Lot 26. Three daughters sell; Coulee Springs Ranch Daphne 4D as Lot 29, Coulee Springs Ranch Ember 3E as Lot 28 and Coulee Springs Ranch Farrah 3F as Lot 30.
- Daughters of Witches Brew carry a productive profile in any herd. This larger framed granddaughter of Styals Lightning Ladd is a great milking female with predictable maternal traits.
- Calved twins in late May 2019. So opted to not breed for 2020.
- Pasture exposed to Notta 119D Phantom 310F from May 28 to September 1, 2020.

CONSIGNED BY: COULEE SPRINGS RANCH



## COULEE SPRINGS RANCH



LOT  
**28**

COULEE SPRINGS RANCH

*Ember* 3E

SIX STAR 82U ROYAL FLESH 101Y  
**NOTTA 101Y CASINO ROYAL 302C**  
NOTTA PRETENDER 33X

SPOTS 'N SPROUTS EXCEL 103X  
**COULEE SPRINGS RANCH BREW 3B**  
STAR BANK WITCHES BREW 16W

STAR BANK KING GEORGE 82U  
STAR BANK 53R  
PRAIRIE HILL JOHN WAYNE 50S  
NOTTA PRETENDER 64P

STYALS LIGHTNING LADD 14P  
CODIAK NADIA RKW 4N  
NOTTA ROMEO 64R  
STAR BANK 89S

| PUREBRED<br>FEMALE | TATTOO    | REG #            | BIRTHDATE     | BIRTH WEIGHT |
|--------------------|-----------|------------------|---------------|--------------|
|                    | CSR 3E    | 8654- PB         | APR. 17, 2017 | 61 LBS.      |
|                    | MYOSTATIN | COAT COLOUR      |               | POLLED       |
|                    | CARRIER   | HOMOZYGOUS BLACK |               | HP           |

- Her mother, Coulee Springs Ranch Brew 3B, sells as Lot 27.
  - Her full sister, 3F, sells as Lot 30.
  - Maternal sister, 4D, sells as Lot 29.
  - This three year old daughter of Notta 101Y Casino Royal is coming into her prime production years. Her genetics are stacked with power and when you add Witches Brew to the mix, this is a sound investment.
  - Pasture exposed to Notta 119D Phantom 310F from May 28 to September 1, 2020.
- CONSIGNED BY: COULEE SPRINGS RANCH



LOT  
**28A**

COULEE SPRINGS RANCH

*Haven* 9H

HWY. 4 SPECKLE PARK 2H  
**NOTTA 2H DECK HAND 318D**  
STAR BANK 54R

PARKLAND SPECKLE PARKS 5B  
LEIGH-AL-ANN PRINCESS 1B  
STAR BANK 94M  
STAR BANK 11

| PUREBRED<br>FEMALE | TATTOO    | REG #            | BIRTHDATE     | BIRTH WEIGHT |
|--------------------|-----------|------------------|---------------|--------------|
|                    | CSR 9H    | 11047- PB        | APR. 18, 2020 | 72 LBS.      |
|                    | MYOSTATIN | COAT COLOUR      |               | POLLED       |
|                    | CARRIER   | HOMOZYGOUS BLACK |               | HP           |

- Just a late April prospect out of a cow with power.
- CONSIGNED BY: COULEE SPRINGS RANCH



# COULEE SPRINGS RANCH



FEATURE

LOT  
**29**

COULEE SPRINGS RANCH *Daphne* 4D

P.A.R. TOUCH DOWN 600T  
**UNEEDA WONDERBAR 05W**  
LANDRY OF P.A.R. 5L

CALAMASUE 10R  
PRETTY LADY OF P.A.R. 600P  
P.A.R. JAGR 68J  
DOUBLE RR ANGEL 151'88

SPOTS 'N SPROUTS EXCEL 103X  
**COULEE SPRINGS RANCH BREW 3B**  
STAR BANK WITCHES BREW 16W

STYALS LIGHTNING LADD 14P  
CODIAK NADIA RKW 4N  
NOTTA ROMEO 64R  
STAR BANK 89S

PUREBRED FEMALE

| TATTOO | REG #    | BIRTHDATE    | BIRTH WEIGHT | MYOSTATIN   | COAT COLOUR      | POLLED |
|--------|----------|--------------|--------------|-------------|------------------|--------|
| CSR 4D | 7557- PB | MAR. 29 2016 | 65 LBS.      | NON-CARRIER | HOMOZYGOUS BLACK | HP     |

- Her mother, Coulee Springs Ranch Brew 3B, sells as Lot 27.
- Maternal sisters... 3E sells as Lot 28 and 3F sells as Lot 30.
- This Witches Brew granddaughter sired by Uneeda Wonderbar 05W has three paternal sisters in our herd.
- Calved April 2, 2020. Calf froze as it was -28°C out, not her fault.
- Pasture exposed to Notta 119D Phantom 310F from May 28 to September 1, 2020.

CONSIGNED BY: COULEE SPRINGS RANCH



## COULEE SPRINGS RANCH



LOT  
**30**

COULEE SPRINGS RANCH *Farrah* 3F

SIX STAR 82U ROYAL FLESH 101Y  
**NOTTA 101Y CASINO ROYAL 302C**  
NOTTA PRETENDER 33X

SPOTS 'N SPROUTS EXCEL 103X  
**COULEE SPRINGS RANCH BREW 3B**  
STAR BANK WITCHES BREW 16W

STAR BANK KING GEORGE 82U  
STAR BANK 53R  
PRAIRIE HILL JOHN WAYNE 50S  
NOTTA PRETENDER 64P

STYALS LIGHTNING LADD 14P  
CODIAK NADIA RKW 4N  
NOTTA ROMEO 64R  
STAR BANK 89S

| PUREBRED<br>FEMALE | TATTOO    | REG #            | BIRTHDATE     | BIRTH WEIGHT |
|--------------------|-----------|------------------|---------------|--------------|
|                    | CSR 3F    | 9421- PB         | MAR. 19, 2018 | 65 LBS.      |
| PUREBRED<br>FEMALE | MYOSTATIN | COAT COLOUR      |               | POLLED       |
|                    | CARRIER   | HOMOZYGOUS BLACK |               | PP           |

- Her mother, Coulee Springs Ranch Brew 3B, sells as Lot 27.
  - Her full sister, 3E, sells as Lot 28.
  - For those looking to start a new cow family or add a front pasture female, look no further.
  - This two year old has done a great job on her first calf and will add high maternal values where ever she goes... fertility, milk and performance all in one package.
  - Pasture exposed to Notta 119D Phantom 310F from May 28 to September 1, 2020.
- CONSIGNED BY: COULEE SPRINGS RANCH



LOT  
**30A**

COULEE SPRINGS RANCH *Hazel* 3H

HWY. 4 SPECKLE PARK 2H  
**NOTTA 2H DECK HAND 318D**  
STAR BANK 54R

PARKLAND SPECKLE PARKS 5B  
LEIGH-AL-ANN PRINCESS 1B  
STAR BANK 94M  
STAR BANK 11H

| PUREBRED<br>FEMALE | TATTOO    | REG #            | BIRTHDATE     | BIRTH WEIGHT |
|--------------------|-----------|------------------|---------------|--------------|
|                    | CSR 3H    | 11042- PB        | MAR. 27, 2020 | 78 LBS.      |
| PUREBRED<br>FEMALE | MYOSTATIN | COAT COLOUR      |               | POLLED       |
|                    | CARRIER   | HOMOZYGOUS BLACK |               | PP           |

- We can only wish that all first calvers could do such a job!
- CONSIGNED BY: COULEE SPRINGS RANCH



## COULEE SPRINGS RANCH

COULEE SPRINGS RANCH *Dohdee* 5D

LOT  
31

P.A.R. TOUCH DOWN 600T  
**UNEEDA WONDERBAR 05W**  
LANDRY OF P.A.R. 5L

LEGACY UNRIVALED 12U  
**CODIAK NANCYS SURPRIZE GNK 11Y**  
CODIAK SHAMELESS 17L

CALAMASUE 10R  
PRETTY LADY OF P.A.R. 600P  
P.A.R. JAGR 68J  
DOUBLE RR ANGEL 151'88

LEGACY SCOUT 10S  
STAR BANK 34R  
HWY. 4 SPECKLE PARK 2H  
CODIAK ACRES ELENOR 13E

| PUREBRED<br>FEMALE | TATTOO      | REG #            | BIRTHDATE     | BIRTH WEIGHT |
|--------------------|-------------|------------------|---------------|--------------|
|                    | CSR 5D      | 6861- PB         | APR. 13, 2016 | 52 LBS.      |
|                    | MYOSTATIN   | COAT COLOUR      | POLLED        |              |
|                    | NON-CARRIER | HOMOZYGOUS BLACK | PP            |              |

- One of our outstanding cows that should be a donor in any program.
  - Beautiful udder, lots of chest, barrel and body mass, this four year old carries older, different genetics.
  - Here is your opportunity to acquire a front pasture cow!
  - Pasture exposed to Notta 119D Phantom 310F from May 28 to September 1, 2020.
- CONSIGNED BY: COULEE SPRINGS RANCH



COULEE SPRINGS RANCH *Haylee* 10H

LOT  
31A

HWY. 4 SPECKLE PARK 2H  
**NOTTA 2H DECK HAND 318D**  
STAR BANK 54R

PARKLAND SPECKLE PARKS 5B  
LEIGH-AL-ANN PRINCESS 1B  
STAR BANK 94M  
STAR BANK 11H

| PUREBRED<br>FEMALE | TATTOO      | REG #            | BIRTHDATE     | BIRTH WEIGHT |
|--------------------|-------------|------------------|---------------|--------------|
|                    | CSR 10H     | 11048- PB        | APR. 18, 2020 | 81 LBS.      |
|                    | MYOSTATIN   | COAT COLOUR      | POLLED        |              |
|                    | NON-CARRIER | HOMOZYGOUS BLACK | PP            |              |

- Analyze her mother and you will take a second look at this late April baby!
- CONSIGNED BY: COULEE SPRINGS RANCH





## COULEE SPRINGS RANCH



LOT  
**32**

COULEE SPRINGS RANCH

*Echo* 7E

SIX STAR 82U ROYAL FLESH 101Y  
**NOTTA 101Y CASINO ROYAL 302C**  
NOTTA PRETENDER 33X

PRAIRIE HILL ENTICER 89G  
**SPOTS 'N SPROUTS 3P**  
SPOTS'N SPROUTS 5J

STAR BANK KING GEORGE 82U  
STAR BANK 53R  
PRAIRIE HILL JOHN WAYNE 50S  
NOTTA PRETENDER 64P

DEB-RAY FRANTIC FRITZ 2B  
LIGHTNING LADY 10Z  
P.A.R. GREAT WESTERN 11F  
SPOTS 'N SPROUTS 21E

| PUREBRED<br>FEMALE | TATTOO      | REG #            | BIRTHDATE     | BIRTH WEIGHT |
|--------------------|-------------|------------------|---------------|--------------|
|                    | CSR 7E      | 8655- PB         | JUL. 29, 2017 | 85 LBS.      |
| PUREBRED<br>FEMALE | MYOSTATIN   | COAT COLOUR      |               | POLLED       |
|                    | NON-CARRIER | HOMOZYGOUS BLACK |               | PP           |

- Echo is one of the farm favorites. This summer born female was flushed IVF as a heifer and the embryos sell.
  - Genetically, she is highly maternal with Royal Flesh and Spots 'N Sprouts 3P.
  - This donor has an exciting daughter at side and a transplant son for your evaluation.
  - Sound footed, beautiful uddered, she has a wonderful disposition and carries the volume and body mass that we all admire.
  - Buy them where you can find them... front pasture material!
  - Pasture exposed to Notta 119D Phantom 310F from May 28 to September 1, 2020.
- CONSIGNED BY: COULEE SPRINGS RANCH



LOT  
**32A**

COULEE SPRINGS RANCH

*Honey* 4H

HWY. 4 SPECKLE PARK 2H  
**NOTTA 2H DECK HAND 318D**  
STAR BANK 54R

PARKLAND SPECKLE PARKS 5B  
LEIGH-AL-ANN PRINCESS 1B  
STAR BANK 94M  
STAR BANK 11H

| PUREBRED<br>FEMALE | TATTOO      | REG #            | BIRTHDATE     | BIRTH WEIGHT |
|--------------------|-------------|------------------|---------------|--------------|
|                    | CSR 4H      | 11043- PB        | MAR. 29, 2020 | 88 LBS.      |
| PUREBRED<br>FEMALE | MYOSTATIN   | COAT COLOUR      |               | POLLED       |
|                    | NON-CARRIER | HOMOZYGOUS BLACK |               | PP           |

- This young lady will make a great project for juniors of any age!
- CONSIGNED BY: COULEE SPRINGS RANCH



## COULEE SPRINGS RANCH

COULEE SPRINGS RANCH *Here* 1H

LOT  
33

UNEEDA ZAPPER 13Z  
**CAJA ZEPELIN 1B**  
NOTTA 60W PHOTO-FINISH 1Z

UNEEDA WALTER 21W  
MISTY FRITZ OF P.A.R. 13M  
RIVER HILL 26T WALKER 60W  
NOTTA PHO-FINISH 54P

NOTTA 101Y CASINO ROYAL 302C  
**COULEE SPRINGS RANCH ECHO 7E**  
SPOTS 'N SPROUTS 3P

SIX STAR 82U ROYAL FLESH 101Y  
NOTTA PRETENDER 33X  
PRAIRIE HILL ENTICER 89G  
SPOTS'N SPROUTS 5J

| PUREBRED<br>MALE | TATTOO    | REG #            | BIRTHDATE     | BIRTH WEIGHT |
|------------------|-----------|------------------|---------------|--------------|
|                  | CSR 1H    | 11021- PB        | MAR. 15, 2020 | 72 LBS.      |
|                  | MYOSTATIN | COAT COLOUR      | POLLED        |              |
|                  | CARRIER   | HOMOZYGOUS BLACK | PP            |              |

- A transplant herd sire prospect sired by the popular and predictable CAJA Zeppelin 1B. His birth weight and phenotype make him a candidate for either pasture. It is awhile until spring but buy them when you can find them.
- CONSIGNED BY: COULEE SPRINGS RANCH



PACKAGE OF 4 IVF *Embryos*

CAJA *Zeppelin* 1B x COULEE SPRINGS RANCH *Echo* 7E

LOT  
33A

UNEEDA ZAPPER 13Z  
**CAJA ZEPELIN 1B**  
NOTTA 60W PHOTO-FINISH 1Z

UNEEDA WALTER 21W  
MISTY FRITZ OF P.A.R. 13M  
RIVER HILL 26T WALKER 60W  
NOTTA PHO-FINISH 54P

NOTTA 101Y CASINO ROYAL 302C  
**COULEE SPRINGS RANCH ECHO 7E**  
SPOTS 'N SPROUTS 3P

SIX STAR 82U ROYAL FLESH 101Y  
NOTTA PRETENDER 33X  
PRAIRIE HILL ENTICER 89G  
SPOTS'N SPROUTS 5J

- Full siblings to Lot 35.
  - Embryos are stored at Bow Valley Genetics, Brooks, Alberta.
  - All costs shall be borne by the purchaser.
- CONSIGNED BY: COULEE SPRINGS RANCH



CAJA ZEPELIN 1B



## COULEE SPRINGS RANCH



LOT  
**34**

CODIAK *Dazzie* GNK 24D

A & W 15R  
**HS UNTAPPED 3A**  
NOTTA 2R PRETENDER 4T

RAVEN MEADOWS MAGNUM 10N  
**UPTO SPECS TEEKA 8T**  
PRAIRIE HILL REBA 154F

BELMORAL'S SPECIAL 99H  
TRIPLE A GEM 15G  
P.A.R. RILLEY 2R  
NOTTA PRETENDER 64P

SPRUCE LANE VENTURE 3J  
PARKLAND SPECKLE PARK 10J  
THUNDER 1C  
SPOTS 'N SPROUTS 1D

| PUREBRED<br>FEMALE | TATTOO      | REG #            | BIRTHDATE     | BIRTH WEIGHT |
|--------------------|-------------|------------------|---------------|--------------|
|                    | GNK 24D     | 8566- AP         | APR. 12, 2016 | 71 LBS.      |
| PUREBRED<br>FEMALE | MYOSTATIN   | COAT COLOUR      |               | POLLED       |
|                    | NON-CARRIER | HOMOZYGOUS BLACK |               | PP           |

- A daughter of the two-time Canadian National Champion Bull, HS Untapped going back to A & W 15R.
  - This heavy milking daughter will add maternal power into all her progeny.
  - Her heifer calf at foot should cause some excitement and her yearling son will be very good property to own.
  - Pasture exposed to Notta 119D Phantom 310F from May 28 to September 1, 2020.
- CONSIGNED BY: COULEE SPRINGS RANCH



LOT  
**34A**

COULEE SPRINGS RANCH *Hope* 8H

HWY. 4 SPECKLE PARK 2H  
**NOTTA 2H DECK HAND 318D**  
STAR BANK 54R

PARKLAND SPECKLE PARKS 5B  
LEIGH-AL-ANN PRINCESS 1B  
STAR BANK 94M  
STAR BANK 11H

| PUREBRED<br>FEMALE | TATTOO      | REG #            | BIRTHDATE     | BIRTH WEIGHT |
|--------------------|-------------|------------------|---------------|--------------|
|                    | CSR 8H      | 11046- PB        | APR. 11, 2020 | 91 LBS.      |
| PUREBRED<br>FEMALE | MYOSTATIN   | COAT COLOUR      |               | POLLED       |
|                    | NON-CARRIER | HOMOZYGOUS BLACK |               | PP           |

- Hope has been an exciting addition from birth. With championship blood in her, she will be an asset to any program she goes to... do not miss her sale day!
- CONSIGNED BY: COULEE SPRINGS RANCH



## COULEE SPRINGS RANCH



FEATURE

LOT  
**35**

COULEE SPRINGS RANCH *Gronk* 3G

MOOVIN ZPOTZ AVENGER 28A  
**WRANGLER MR PERFECT 8D**  
ANGEL OF P.A.R. 8Z

MOOVIN ZPOTZ CAMARO 6X  
HWY 4 SPECKLE PARK 4R  
P.A.R. XCALABAR 6X  
ANGEL OF P.A.R. 8U

HS UNTAPPED 3A  
**CODIAK DAZZIE GNK 24D**  
UPTO SPECS TEEKA 8T

A & W 15R  
NOTTA 2R PRETENDER 4T  
RAVEN MEADOWS MAGNUM 10N  
PRAIRIE HILL REBA 154F

PUREBRED MALE

| TATTOO | REG #     | BIRTHDATE     | BIRTH WEIGHT | MYOSTATIN   | COAT COLOUR      | POLLED |
|--------|-----------|---------------|--------------|-------------|------------------|--------|
| CSR 3G | 11020- PB | APR. 24, 2019 | 85 LBS.      | NON-CARRIER | HOMOZYGOUS BLACK | PP     |

- Gronk is a long sided, thick butted herd sire prospect with a large scrotal development.
- He is sired by the Canadian National Champion, Wrangler Mr Perfect 8D, and out of a daughter of a two-time Agribition Champion HS Untapped... this bull is bred in the purple. If you select bulls by the quality of their mothers, do not overlook this herd bull!

CONSIGNED BY: COULEE SPRINGS RANCH



## COULEE SPRINGS RANCH



LOT  
**36**

COULEE SPRINGS RANCH *Dory* 8D

P.A.R. TOUCH DOWN 600T  
**UNEEDA WONDERBAR 05W**  
LANDRY OF P.A.R. 5L

SPOTS 'N SPROUTS EXCEL 103X  
**COULEE SPRINGS RANCH EARLY 1A**  
CODIAK HAZEL GNK 13Y

CALAMASUE 10R  
PRETTY LADY OF P.A.R. 600P  
P.A.R. JAGR 68J  
DOUBLE RR ANGEL 151'88  
STYALS LIGHTNING LADD 14P  
CODIAK NADIA RKW 4N  
CODIAK TRUMP GNK 20T  
A & W 013U

| PUREBRED<br>FEMALE | TATTOO    | REG #       | BIRTHDATE     | BIRTH WEIGHT |
|--------------------|-----------|-------------|---------------|--------------|
|                    | CSR 8D    | 6862- PB    | APR. 19, 2016 | 60 LBS.      |
| PUREBRED<br>MALE   | MYOSTATIN | COAT COLOUR |               | POLLED       |
|                    | CARRIER   | RED CARRIER |               | HP           |

- Dory is a deep bodied, good uddered, gentle daughter of Uneeda Wonderbar.
  - This four year old has lots of milk as she enters the prime of her production life.
  - Pasture exposed to Notta 119D Phantom 310F from May 28 to September 1, 2020.
- CONSIGNED BY: COULEE SPRINGS RANCH



LOT  
**36A**

COULEE SPRINGS RANCH *Hussain* 7H

HWY. 4 SPECKLE PARK 2H  
**NOTTA 2H DECK HAND 318D**  
STAR BANK 54R

PARKLAND SPECKLE PARKS 5B  
LEIGH-AL-ANN PRINCESS 1B  
STAR BANK 94M  
STAR BANK 11

| PUREBRED<br>MALE   | TATTOO      | REG #       | BIRTHDATE    | BIRTH WEIGHT |
|--------------------|-------------|-------------|--------------|--------------|
|                    | CSR 7H      | 11045- PB   | APR. 6, 2020 | 66 LBS.      |
| PUREBRED<br>FEMALE | MYOSTATIN   | COAT COLOUR |              | POLLED       |
|                    | NON-CARRIER | RED CARRIER |              | HP           |

CONSIGNED BY: COULEE SPRINGS RANCH



## COULEE SPRINGS RANCH

NOTTA 119D *Phantom* 310F

LOT  
37

NOTTA 101Y BARCODE 113B  
**WRANGLER MR COMPLETE 119D**  
RAVENWORTH PRAIRIE LILY 119B

UNEEDA ZAPPER 13Z  
**NOTTA 13Z PHOTO-FINISH 208D**  
NOTTA 15R PHOTO-FINISH 4Z

SIX STAR 82U ROYAL FLESH 101Y  
SPOTS 'N SPROUTS 3R  
RIVER HILL 12X ZAAR 7Z  
STAR BANK TARAZED 46T

UNEEDA WALTER 21W  
MISTY FRITZ OF P.A.R. 13M  
A & W 15R  
NOTTA PHO-FINISH 54P

| PUREBRED<br>MALE | TATTOO      | REG #            | BIRTHDATE     | BIRTH WEIGHT |
|------------------|-------------|------------------|---------------|--------------|
|                  | JMG 310F    | 8665- PB         | FEB. 25, 2018 | 76 LBS.      |
|                  | MYOSTATIN   | COAT COLOUR      | POLLED        |              |
|                  | NON-CARRIER | HOMOZYGOUS BLACK | HP            |              |

- Notta Phantom 310F is a powerful genetic package with a low birth weight. He was campaigned at Agribition as a calf and a yearling then we purchased him in the Supreme Sale in April 2019. He excels in body type, free moving and easy keeping whether he is at home or out in the pasture breeding. Plan to see the Phantom!

CONSIGNED BY: COULEE SPRINGS RANCH



LOT  
38

100 UNITS OF SEMEN - NOTTA 119D *Phantom* 310F

LOT **38A** - 10 UNITS OF SEMEN  
LOT **38B** - 10 UNITS OF SEMEN  
LOT **38C** - 10 UNITS OF SEMEN  
LOT **38D** - 10 UNITS OF SEMEN  
LOT **38E** - 10 UNITS OF SEMEN  
LOT **38F** - 10 UNITS OF SEMEN  
LOT **38G** - 10 UNITS OF SEMEN  
LOT **38H** - 10 UNITS OF SEMEN  
LOT **38I** - 10 UNITS OF SEMEN  
LOT **38J** - 10 UNITS OF SEMEN

- Canada use only.
- Stored at Bow Valley Genetics, Brooks, Alberta.
- All cost borne by the purchaser.

CONSIGNED BY: COULEE SPRINGS RANCH

LOT  
39

100 UNITS OF SEMEN - NOTTA 119D *Phantom* 310F

LOT **39A** - 10 UNITS OF SEMEN  
LOT **39B** - 10 UNITS OF SEMEN  
LOT **39C** - 10 UNITS OF SEMEN  
LOT **39D** - 10 UNITS OF SEMEN  
LOT **39E** - 10 UNITS OF SEMEN  
LOT **39F** - 10 UNITS OF SEMEN  
LOT **39G** - 10 UNITS OF SEMEN  
LOT **39H** - 10 UNITS OF SEMEN  
LOT **39I** - 10 UNITS OF SEMEN  
LOT **39J** - 10 UNITS OF SEMEN

- Exportable to USA, Australia and New Zealand.
- Stored at Bow Valley Genetics, Brooks, Alberta.
- All cost borne by the purchaser.

CONSIGNED BY: COULEE SPRINGS RANCH



# COULEE SPRINGS RANCH

LOT  
**40**

4 UNITS OF SEMEN - RIVER HILL 12X

*Ai'Nan* 94A



CODIAK TRUMP GNK 20T  
**CODIAK FIDDLER GNK 12X**  
CODIAK SALLY SUE GNK 17U

PAIRIE HILL MASTERPLAN II 87L  
**PAIRIE HILL PASSION 94P**  
PAIRIE HILL FANCY PANTS 93J

HWY. 4 SPECKLE PARK 20L  
EL RANCHO NO GOTTO SHANS 02J  
RAVEN MEADOWS MAGNUM 10N  
CODIAK CDK 26P

PAIRIE HILL MASTERPLAN 97G  
PAIRIE HILL LUCKY ROLLIE 87G  
PAIRIE HILL ENTICER 89G  
PAIRIE HILL 2G

| PUREBRED<br>MALE | TATTOO    | REG #       | BIRTHDATE     | BIRTH WEIGHT |
|------------------|-----------|-------------|---------------|--------------|
|                  | MYOSTATIN | COAT COLOUR | POLLED        |              |
|                  | BED 94A   | 4278-PB     | MAR. 31, 2013 | 90 LBS.      |

- Canada use only.
- Stored at Bow Valley Genetics, Brooks, Alberta.
- All cost borne by the purchaser.

CONSIGNED BY: COULEE SPRINGS RANCH



REF  
SIRE

NOTTA 2H *Deck Hand* 318D

PARKLAND SPECKLE PARKS 5B  
**HWY. 4 SPECKLE PARK 2H**  
LEIGH-AL-ANN PRINCESS 1B

STAR BANK 94M  
**STAR BANK 54R**  
STAR BANK 11H

DOUBLE RR RASCAL 138'88  
PARKLAND SPECKLE PARKS 2Y  
ASPEN ACRES T.N.T. 4Y  
LEIGH-ANN 1Z

SPOTS 'N SPROUTS JUNO 103J  
JANETTE OF P.A.R. 44H  
NORALTA 9E  
LIGHTNING LADY 19C

| PUREBRED<br>MALE | TATTOO      | REG #            | BIRTHDATE     | BIRTH WEIGHT |
|------------------|-------------|------------------|---------------|--------------|
|                  | MYOSTATIN   | COAT COLOUR      | POLLED        |              |
|                  | JMG 318D    | 6901-PB          | MAR. 24, 2016 | 81 LBS.      |
|                  | NON-CARRIER | HOMOZYGOUS BLACK |               | PP           |

NOTTA 2H DECK HAND 318D AS A YEARLING



## TERMS & CONDITIONS...

### **TERMS:**

The terms of the sale are cash or cheque, payable at par at the sale location. The right of property shall not pass until after settlement has been made; no invoicing on buyers in attendance unless previous arrangements have been made. Every animal sells to the highest bidder and in cases of disputes, the auctioneer's decision will be final. Announcements from the auction block will take precedence over the printed matter in the catalogue. Current exchange rates will be announced sale day. All monies are in Canadian funds.

### **CERTIFICATE OF REGISTRATIONS:**

Each purebred animal will carry papers issued by the Canadian Speckle Park Association. A certificate of registry duly transferred will be furnished to the buyer for each animal after payment has been made.

### **HEALTH:**

All animals in the sale have met all necessary health requirements.

### **GUARANTEE:**

All sellers and buyers of Speckle Park cattle in this sale are expected to be knowledgeable of and to abide by the Guidelines for Seller and Buyer Expectations and the By-laws of the Canadian Speckle Park Association. These documents are available from the Association's office.

### **PREGNANCY INFORMATION:**

All serviceable age females have been pregnancy examined by an accredited veterinarian, giving an estimated length of gestation. This estimated gestation period shall be used only as a guideline to calving and is not a guarantee of actual service.

### **LIABILITIES:**

All persons attend the sale at their own risk. The seller, facility owner and sale manager assume no liability legal or otherwise, for any accidents that occur. It is understood that T Bar C Cattle Co. (2013) Ltd. is acting only as a medium between buyer and seller and is not responsible for any failure on the part of either party to live up to his obligations. Neither does T Bar C Cattle Co. (2013) Ltd. assume any financial obligations to collect or enforce collection of any monies between parties and any legal action that may in exceptional cases be taken must be between the buyer and the seller. T Bar C Cattle Co. (2013) Ltd. assumes no responsibility for any credit extended by the seller to the buyer. The buyer must look to the seller for fulfillment of all guarantees and representations made hereunder.

### **DELIVERY:**

Every assistance will be given in getting your purchases home. Each animal becomes the risk of the purchaser as soon as sold.

### **PHONE, MAIL, WIRE BIDS:**

Bidders unable to attend the sale may phone, wire or mail their bids and instructions to the sale manager, auctioneer or special representatives. Bids must be received in sufficient time prior to the sale.

### **INSURANCE:**

We strongly recommend that insurance is purchased for full value.

### **ERRORS:**

All announcements at sale time, written or oral, supersede any written material in the catalogue.

## NOTES...

---

---

---

---

---



Return Undeliverable  
Canadian Addresses To:

T Bar C Cattle Co. Ltd.  
Box 2330  
Warman, SK S0K 4S0



2020  
*Legendary*  
**Ladies**  
**SPECKLE PARK SALE**

Created By:

*Today's*  
Publishing